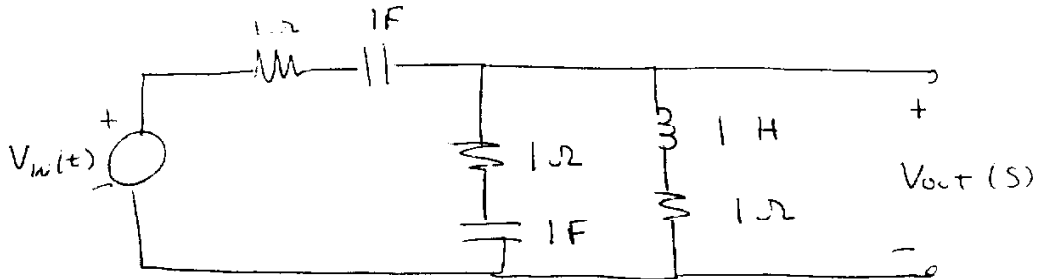


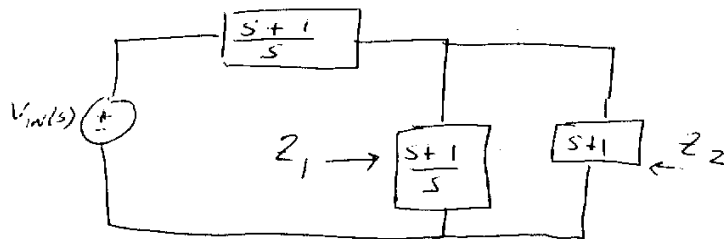
ECE 460 - Quiz #5

2/10/99

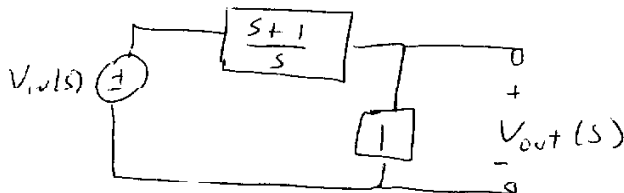
Write the transfer function $G(s) = \frac{V_{out}(s)}{V_{in}(s)}$
for the network shown below.



REDRAW:



$$Z_{EQ} = \frac{Z_1 Z_2}{Z_1 + Z_2} = 1$$



$$\frac{V_{out}(s)}{V_{in}(s)} = \frac{1}{\frac{s+1}{s} + 1} = \boxed{\frac{s}{2s+1}}$$