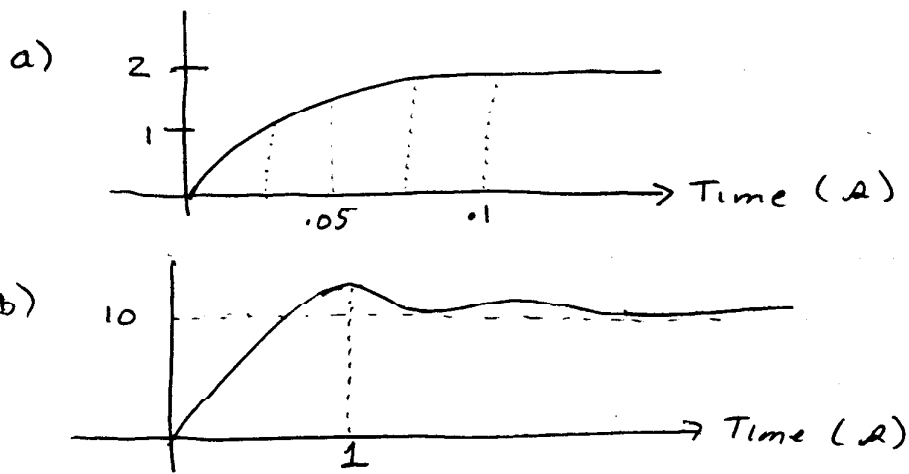


ECE 460/365 HW # 4

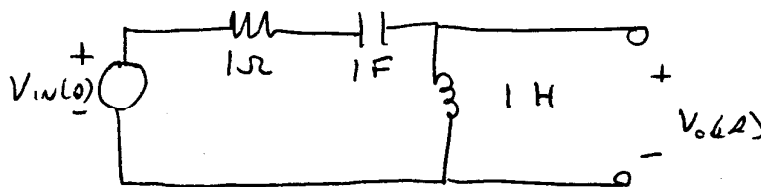
4-23 Find % OS, T_s , T_p For

$$G(s) = \frac{14.145}{(s^2 + 1.204s + 2.829)(s + 5)}$$

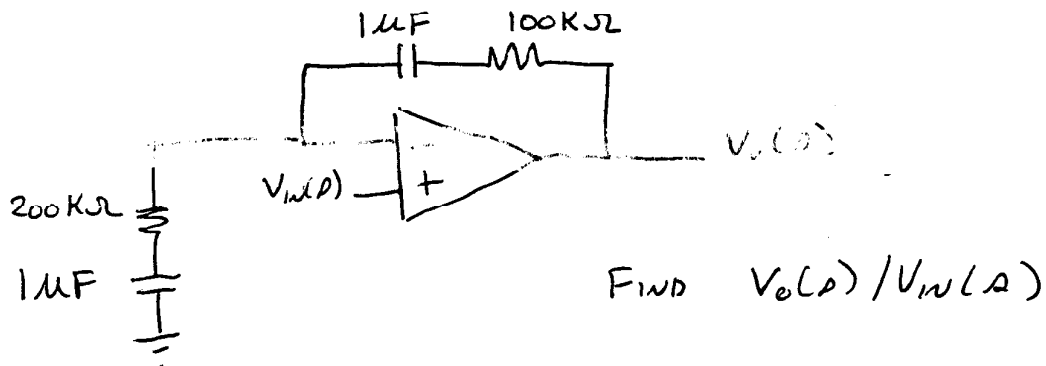
4-24 Find the transfer function for each of the following



2-14 Find $V_o(s)/V_{in}(s)$

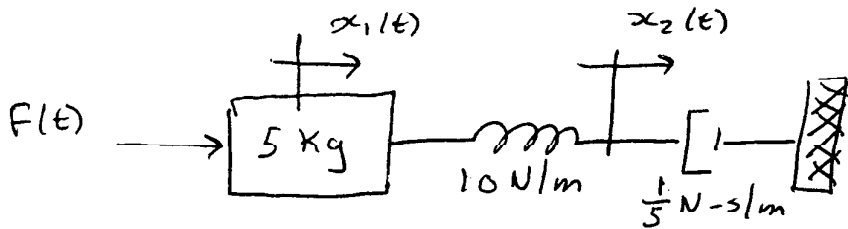


2-20

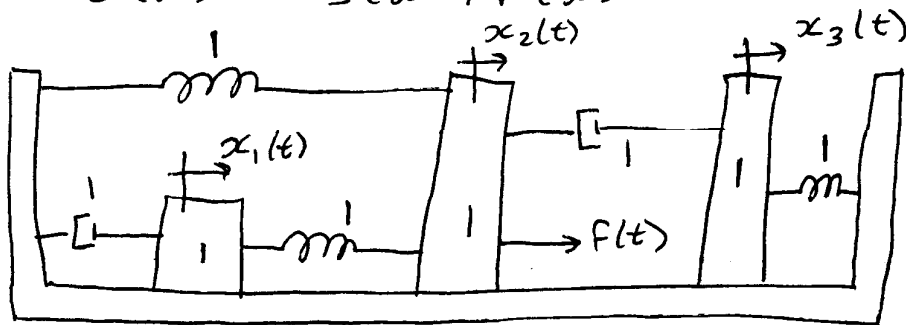


Find $V_o(s)/V_{in}(s)$

2-23 Find $G(s) = X_2(s) / F(s)$ (Hint: Place a zero mass at $x_2(t)$)



2-25 Find the transfer function $G(s) = X_3(s) / F(s)$



The floor is frictionless.