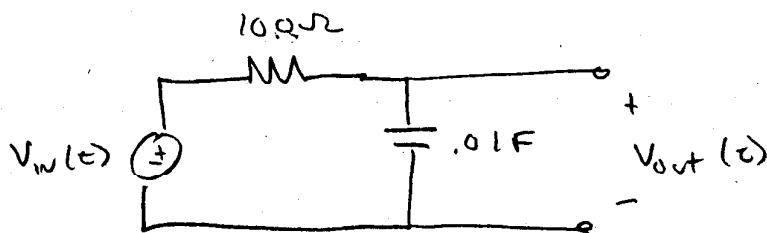


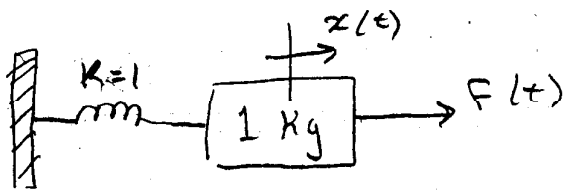
ECE 460 Q4 02/07/00 KEY

[5pts] a) Find the Transfer Function
$$\frac{V_{out}(s)}{V_{in}(s)}$$



$$G(s) = \frac{\frac{1}{.01s}}{100 + \frac{1}{.01s}} = \frac{1}{s + 1}$$

[5pts] b) Find the Transfer Function
$$\frac{X(s)}{F(s)}$$



$$G(s) = \frac{1}{s^2 + 1}$$